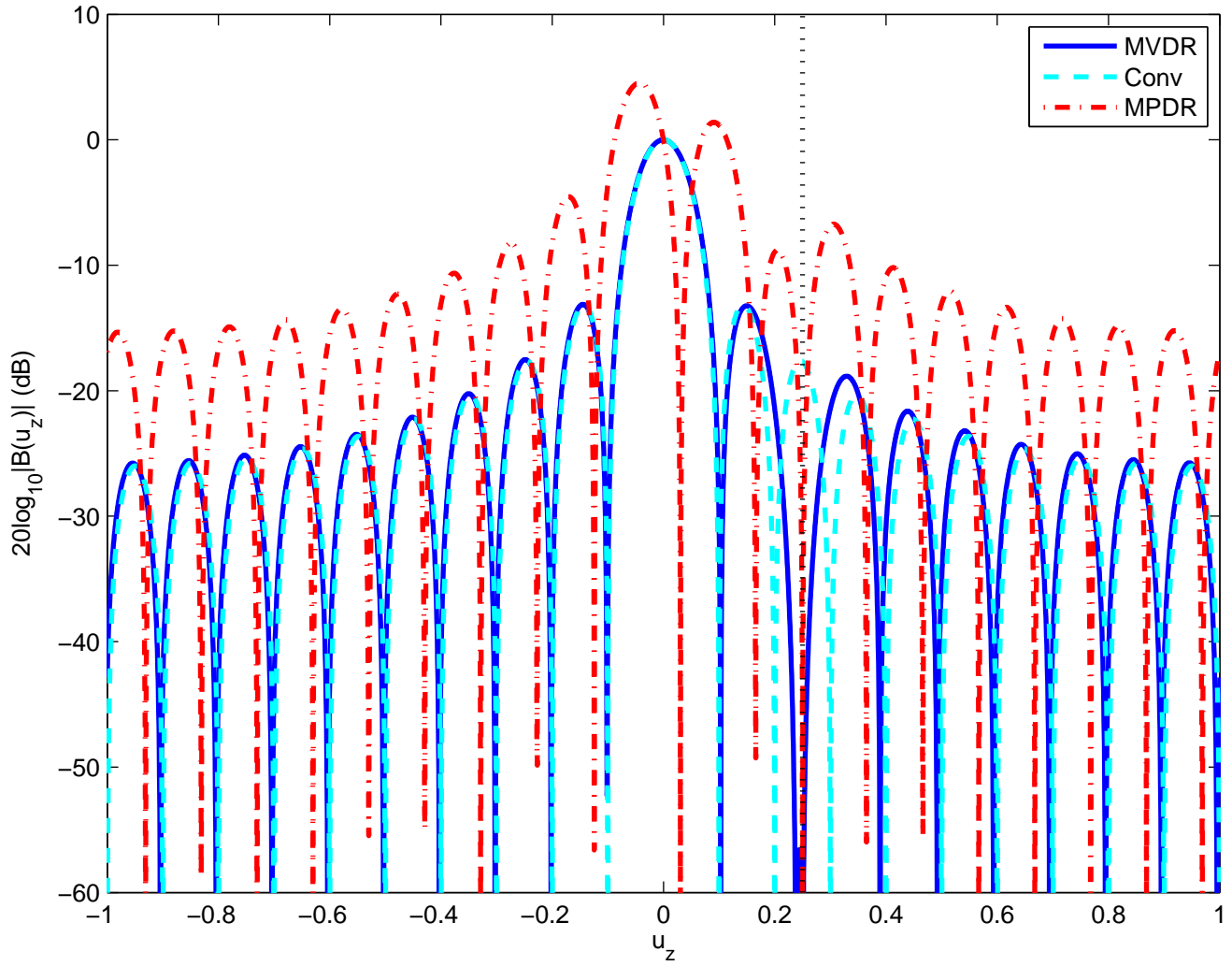
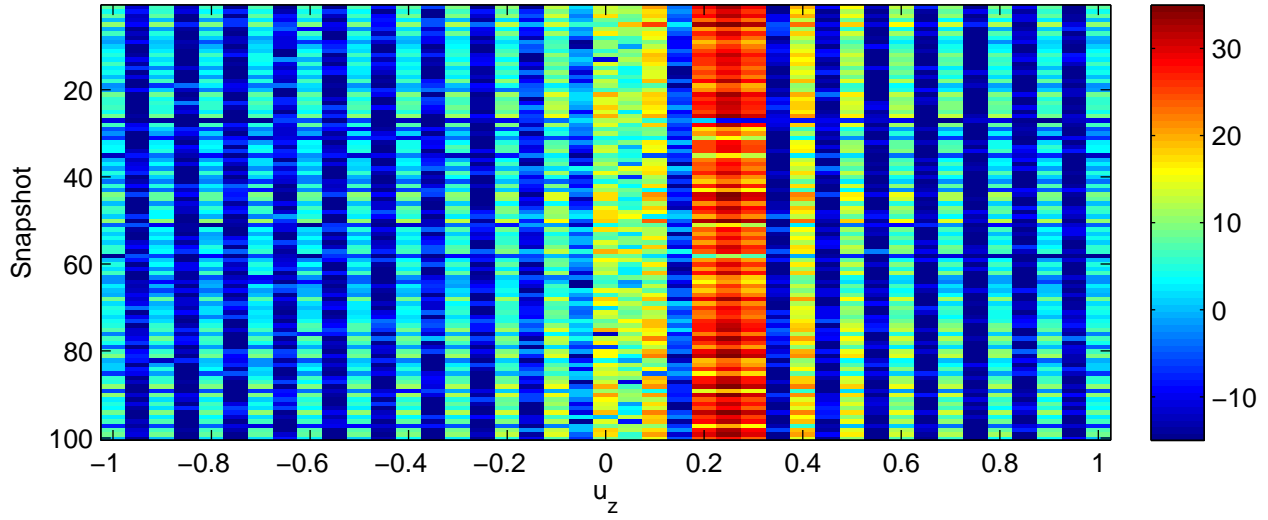


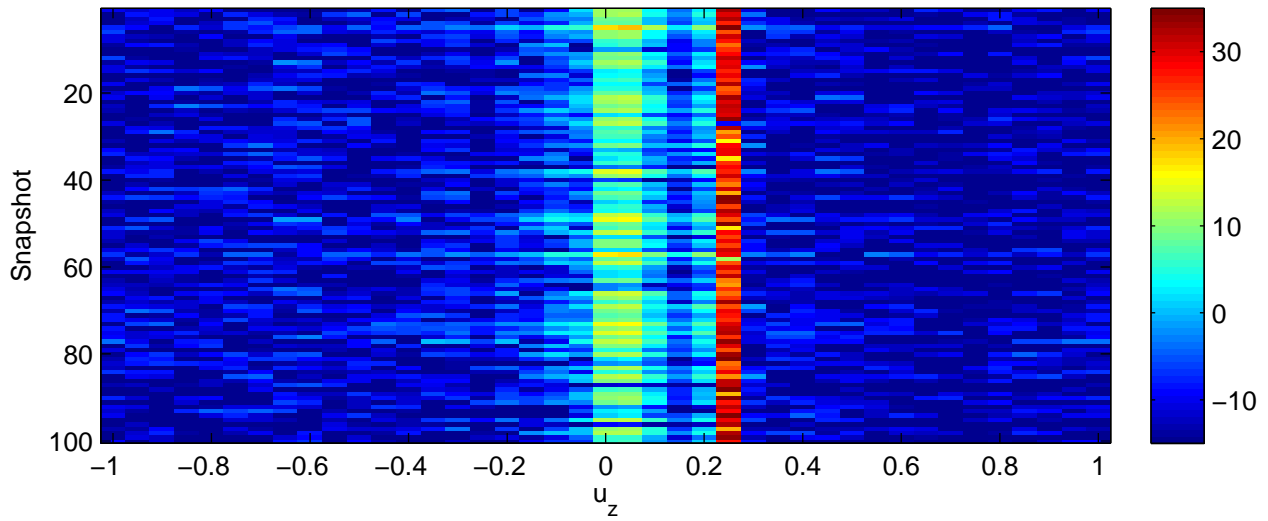
SNR=10 dB $u_s=0.0300$ INR=30 dB, $u_l=0.2500$



Conventional beamformer with $\Delta u_z = 1.00/N$



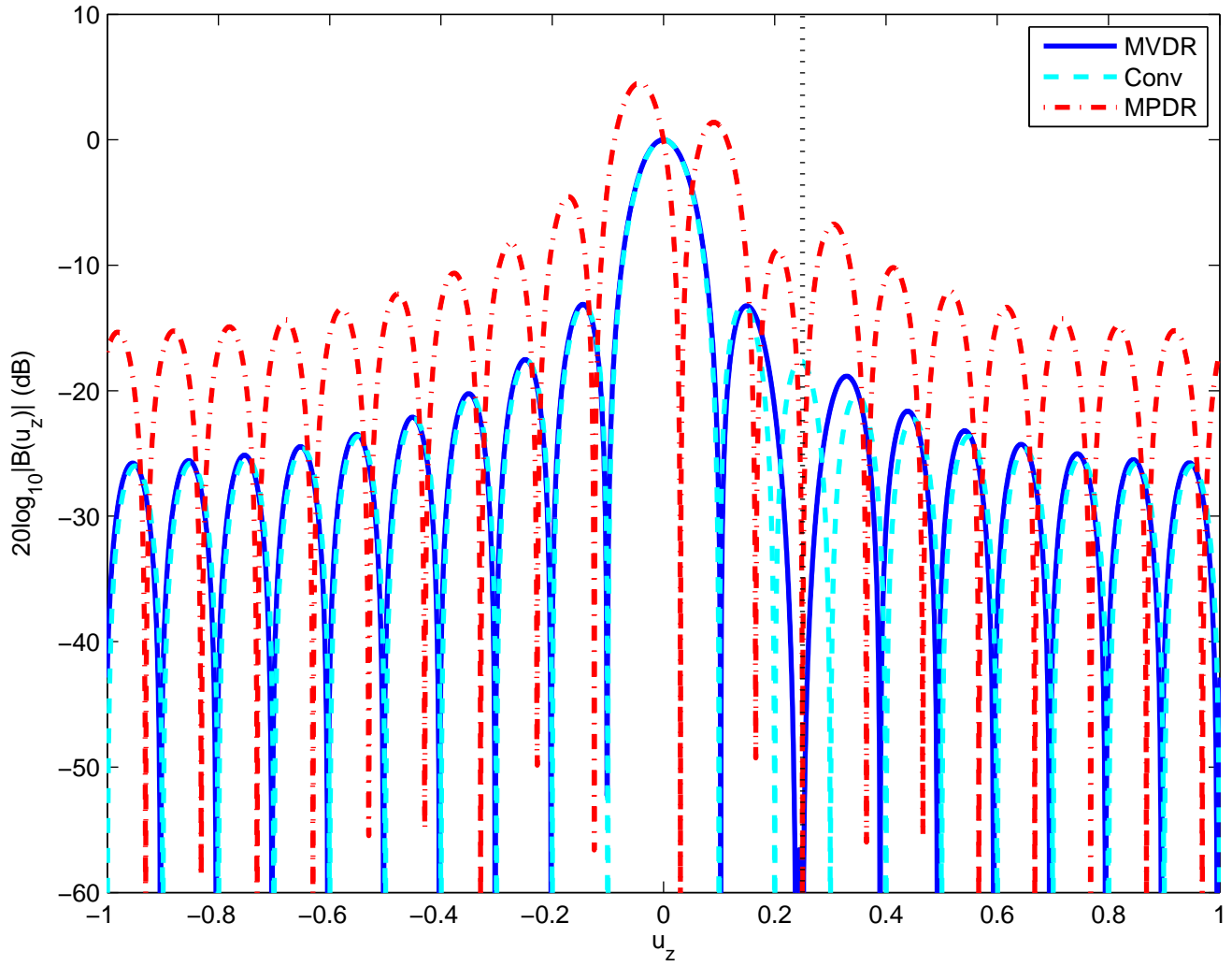
Ideal MVDR beamformer with $\Delta u_z = 1.00/N$



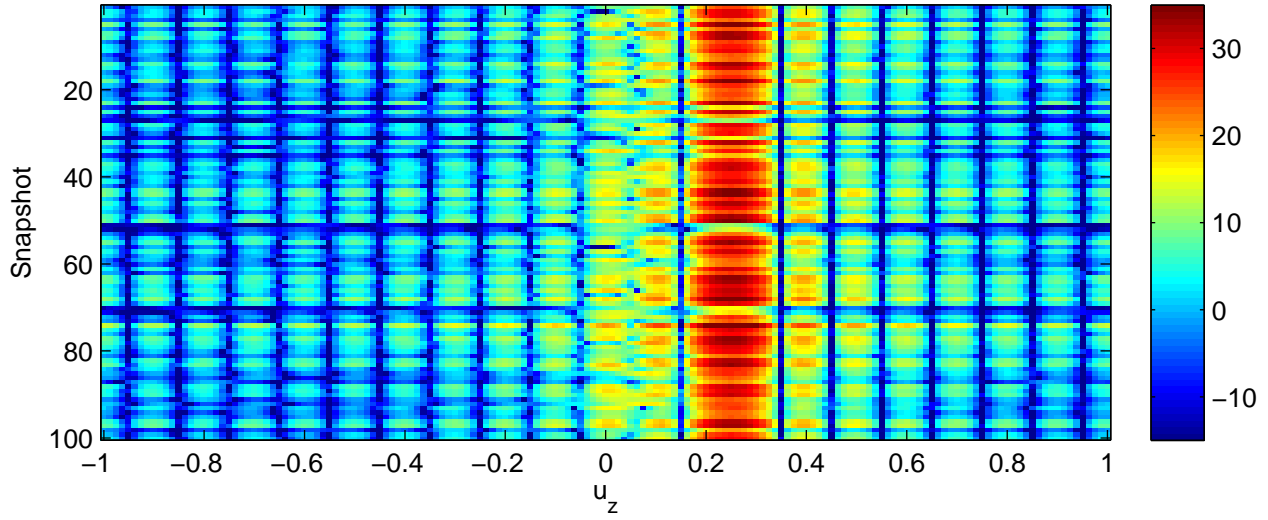
Ideal MPDR beamformer with $\Delta u_z = 1.00/N$



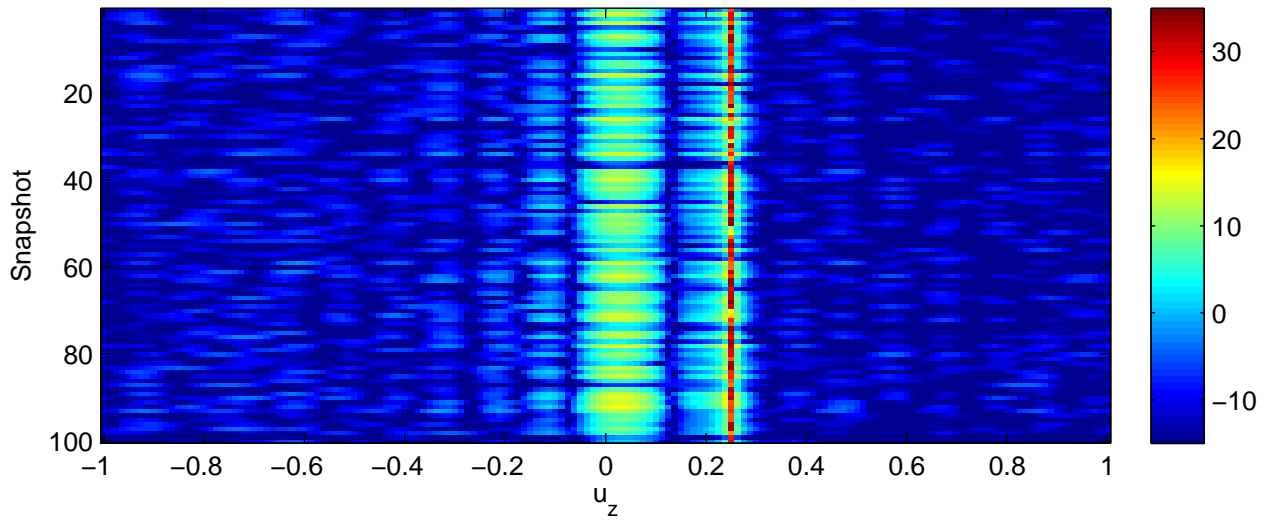
SNR=10 dB $u_s=0.0300$ INR=30 dB, $u_l=0.2500$



Conventional beamformer with $\Delta u_z = 0.25/N$



Ideal MVDR beamformer with $\Delta u_z = 0.25/N$



Ideal MPDR beamformer with $\Delta u_z = 0.25/N$

